

XINTECH surface treatment technology guarantees the requirements of optimal surfaces

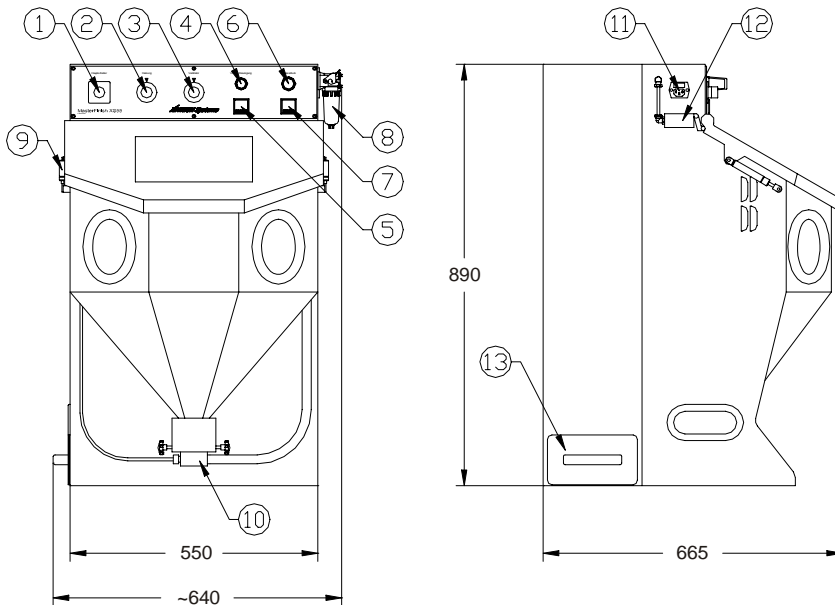
Sablux Technik AG
 Bramenstr. 14
 CH-8184 Bachenbülach
 Switzerland
 Phone 043 411 44 22
 Fax 043 411 44 23
<http://www.sablux.ch>



The blasting unit XS55 has been developed as compact machine for surface treatment of smaller parts. The basic principle of housing design is originated from our success story with experience of more than 15 years. Essential technical achievements out of long-time experience of 75 Series have been brought in this new model. In short, an economically priced, nevertheless high-technology unit is born.

Digital displays for pre-acceleration and blasting pressure (optional) ensure defined input and guarantee thus absolute reproducibility at repeated work.

Injector Micro Blasting Unit
 MasterFinish XS 55



- | | |
|--|----------------------------------|
| 1) main switch | 7) manometer (blasting pressure) |
| 2) power controller for heater (optional) | 8) oil/water separator |
| 3) fan rotation speed controller | 9) gas spring |
| 4) pressure controller (pre-acceleration) | 10) blasting media feeding cup |
| 5) manometer (pre-acceleration pressure) | 11) power supply connection |
| 6) pressure controller (blasting pressure) | 12) door limit switch |
| | 13) dust collection drawer |

MasterFinish XS 55

XINTECH SYSTEMS

Technical Data

Sablux Technik AG
Bramenstr. 14
CH-8184 Bachenbülach
Switzerland
Phone 043 411 44 22
Fax 043 411 44 23
<http://www.sablux.ch>

| | |
|---------------------|---|
| Cabin dimensions | W 550* x T 665 x H 890 mm (*with oil/water separator : 640mm) |
| Working area | B 545 x T 370 x H 350* mm (* useful height) |
| Weight approx. | 80 kg |
| Power consumption | 230 VA |
| Electric connection | 230 V / 50-60 Hz |
| Air connection | G1/4" |
| Pressure range | 0.5 - 10 bar (depending on air supply pressure) min. supply pressure 6 bar |

Main features:

- Opening flap, equipped with two gas spring (open space 545 x 300 mm), with integrated sight window, consists of security and attrition glass, easy to change thanks to glass frame with two screws.
- Filter unit with two high performance micro cartridge filters which are cleaned automatically in stand-by and blasting pause modus.
- Blasting media separator, optimised by rotation speed of ventilator.
- Air pistol, supplied with system pressure.
- Air supply connection G1/4", incl. oil/water separator.
- Impulse foot pedal with robust PUR cable and connector.
- Dust box drawer of steel on the unit side.
- Two-pole main switch with three stages (off / stand-by / blast)
- Borosilicate glass tube illumination 24W, bright white.
- Optimised radial ventilator, rotation speed adjustable by knob on the front plate.
- Security limit switch on opening flap.
- Two-part working grate made of perforated plate (hole \varnothing 5). Max. load 15 kg.
- Working gloves on mounting flange for easy replacement from front side.
- Blasting media heating system (optional) 150W with protection cover, 0 - 150 W continuously adjustable.
- Blasting pistol with hard metal nozzle 4 mm (standard).
- Blasting pressure, adjustable 0 - 8 bar by pressure controller on the front plate.
- Analogue manometer for blasting pressure on the front plate (digital : optional).
- Pre-acceleration pressure, adjustable 0 - 2 bar by pressure controller on the front plate.
- Analogue manometer for pre-acceleration and blasting pressure on the front plate (digital: optional).

Options:

- Double working hour counter for stand-by and blasting time.
- Digital display for pre-acceleration and blasting pressure.

MasterFinish XS 55

XINTECH SYSTEMS

JUN2013