

XINTECH surface treatment technology guarantees the requirements of optimal surfaces

Sablux Technik AG
 Bramenstr. 14
 CH-8184 Bachenbülach
 Switzerland
 Tel. 043 411 44 22
 Fax 043 411 44 23
<http://www.sablux.ch>



Every operation on metallic surface leaves residual substance like so-called "white layer" after wire or cavity-sinking EDM operation, or residue after grinding. These inadequate surfaces often lead to problem at ejecting of plastic parts or to contamination by deposit.

Your moulds can be prepared adequately for high productivity and long running-time by surface treatment using XINTECH micro-blasting unit. In this multiple-stage process, exactly defined blasting agents are used of which composition and the grain diameter are specified for each application.

The quality of produced parts depend mostly on the condition of the mould, especially in plastic processing field.

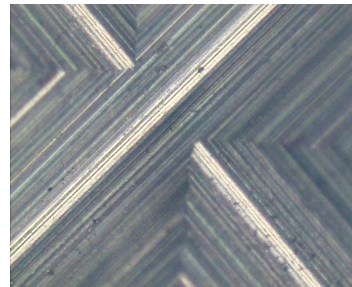
EDM-operated surfaces:

The "white layer" which arises after wire or cavity-sinking EDM operation (melting zone in case of hardened metal) can be removed by using XINTECH micro-blasting technique. An optimising of the surface roughness takes place at the same time.

XINTECH MasterFinish is able to carry out blasting operation with pressure setting < 0,5 bar even without blasting-media accelerator.

Grinded surfaces:

Grinding wheel of flat or cylindrical grinding machine influence the operated surfaces negatively, for example : groove, overheating or carbide contamination. Such loose particles can be removed completely by XINTECH micro-blasting process. After this operation, the cleaned surfaces can be smoothed to the desired friction coefficient.



Injection mould before and after two-step-micro-blasting operation

MasterFinish 75

XINTECH SYSTEMS

Technical data

Sablux Technik AG
Bramenstr. 14
CH-8184 Bachenbülach
Switzerland
Tel. 043 411 44 22
Fax 043 411 44 23
<http://www.sablux.ch>

Overall dimensions	Width	900 mm
	Depth	980 mm
	Height	1760 - 2160 mm
Working area	Width	740 mm
	Depth	500 mm
	Useful height	640 mm
Weight approx.	approx. 235 kg	
Air blower output	approx. 250 l/min. (at 3 bar)	
Pressure range	approx. 320 W	
Electric connection	230 V / 50 Hz	
Air connection	G1/4"	

Main features:

- Oil/water separator
- Inside illumination LED 14W
- Cabinet grates of perforated plates, detachable
- Sight window with security glass
- Blasting pistol with hard metal nozzle (Standard \varnothing 5mm, other dimensions available as option)
- Cleaning/air nozzle in blasting cabin
- Blasting media heating system with temperature controller for drying blasting material (optional)
- Injector mixing unit with pre-acceleration for blasting material
- Reducing valve / manometer 0 - 10 bar (blasting pressure), 0 - 4 bar (pre-acceleration pressure), digital manometer available as option
- Automatic maintenance-free recuperation of blasting material by integrated cyclone
- Integrated filter system with high blower capacity for good visibility, with automatic filter cleaning system
- Electrical foot pedal
- Integrated height adjusting system

MasterFinish 75

XINTECH SYSTEMS

FEB2020